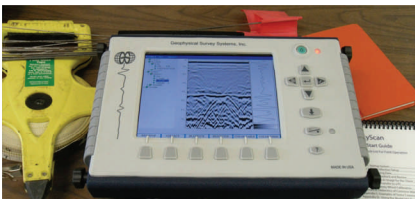


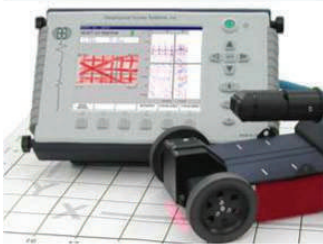


*THE VERTERRE GROUP*

# Ground Penetrating Radar (GPR)



**Concrete Scanning Tool**



Ground Penetrating Radar is a non-destructive method of locating and mapping utilities and underground storage tanks. It has a wide range of applications such as:

- **Utility Location** where it can be used to find pvc, fiberglass or metal conduits. GPR can locate non-metallic utilities (even those without a trace wire) to exact location and approximate depth.
- **Underground storage tanks**– can be used to locate in use or abandoned USTs including **septic tanks** and leach fields.
- **Concrete inspections** where it can be used to find voids and rebar.
- **Archaeological investigations** where it can be used to find graves and old foundations.

It is a fast reliable method. Call today and see how we can help you.

## **THE VERTERRE GROUP**

**Environmental Scientists and Field  
Services**

**414 Roosevelt Highway  
Suite 200  
Colchester, VT 05446**

**[www.verterregroup.com](http://www.verterregroup.com)**

**Phone: 802-654-8663**

**Fax: 802-654-8667**

**E-mail: [info@verterre.com](mailto:info@verterre.com)**